

5.5-inch Full HD Waveform LCD Monitor



Package Option

Simple package includes



Luxury package includes additional

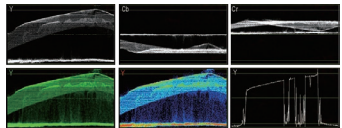


Video quality monitoring assist

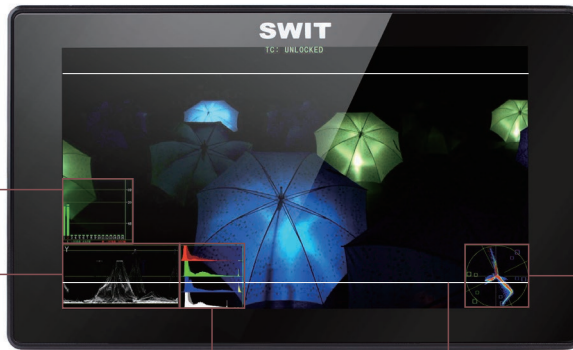
Audio Meters

SDI: 16-ch / HDMI: 2-ch
 Select any 2 channel to output
 Audio abnormal alert info display
 Display only 2-ch, 8-ch, or full 16-ch
 Chart position / Translucent adjust

Waveforms



Y/Cb/Cr/R/G/B with single line selection
 White / Green / False color display
 Larger size waveform in center
 Chart position / Translucent adjust



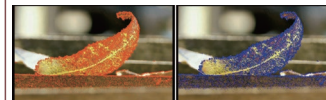
Histogram

R/G/B/Y histogram display
 100%–107% Over-exposure alert

Features

- ◆ 5.5" LCD, 1920×1080 full HD
- ◆ Optical bonding LCD panel
- ◆ All metal housing, thinner and robust
- ◆ 2K/3G/HD/SD-SDI input and loop out
- ◆ HDMI input and converted to SDI out
- ◆ 16-ch Embedded audio meters with alert
- ◆ Select any 2 audio channels to output
- ◆ Waveform Y/Cb/Cr/R/G/B and single line
- ◆ Vector scope, histogram R/G/B/Y
- ◆ Peaking focus assist (dual color)
- ◆ AFD, timecode, H/V delay, Zebra stripes
- ◆ Marker 4:3, 13:9, 14:9, 15:9, 1.85:1, 2.35:1
- ◆ False color, R/G/B/Mono, 100% colorbar
- ◆ Various DV battery plate install
- ◆ USB firmware upgrade

Peaking Focus Assist



Red / Blue lines select

Vector Scope

White / Color / False color display
 Larger size vector pattern in center
 Chart position / Translucent adjust

Scale Markers

4:3, 13:9, 14:9, 15:9, 1.85:1, 2.35:1 markers
 Mask background translucent adjust

Specification

LCD Performance

Size	5.5 inches
Display area	121 × 68mm
Resolution	1920 × 1080
Aspect ratio	16:9 (4:3 adjustable)
Brightness	400cd/m ²
Contrast	1000:1
Color	16.77 million colors
Viewing angle	Horizontal: 160° ; Vertical: 160°

Input

BNC × 1	2K/3G/HD/SD-SDI input
HDMI × 1	HDMI 1.3 input
Mini USB × 1	Firmware upgrade

Output

BNC × 1	2K/3G/HD/SD-SDI loop output or HDMI converted to SDI output
3.5mm × 1	SDI, HDMI embedded audio output

Video Format

SDI	SMPTE 2048-2	2048 × 1080p (23.98 / 24 / 25 / 29.97 / 30 / 50 / 59.94 / 60) 2048 × 1080i (50 / 59.94 / 60)
	SMPTE-425M	1080p (60 / 59.94 / 50)
	SMPTE-274M	1080i (60 / 59.94 / 50) 1080p (30 / 29.97 / 25 / 24 / 23.98)
	SMPTE-RP211	1080psf (30 / 29.97 / 25 / 24 / 23.98)
	SMPTE-296M	720p (60 / 59.94 / 50)
	SMPTE-125M	480i (59.94)
HDMI	ITU-R BT.656	576i (50)
		480i / 576i / 480p / 576p
		1080i (60 / 59.94 / 50)
		720p (60 / 59.94 / 50) 1080p (60 / 59.94 / 50 / 30 / 29.97 / 25 / 24 / 23.98)

General

Working voltage	DC / battery 6.5V–24V
Power consumption	12W
Working temperature	-10°C ~ +50°C
Working humidity	10% ~ 90%
Storage temperature	-15°C ~ +60°C
Storage humidity	10% ~ 90%
Dimensions	151 × 91 × 32mm
Net weight (main body)	375g