

# SWIT®

## S-1243F

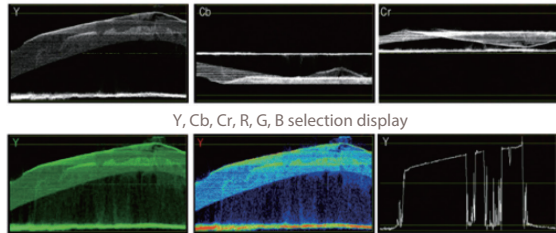
### 23.8" Waveform Studio LCD Monitor



#### Waveform



display position selection:  
four corners and large centre,  
with adjusted transluence



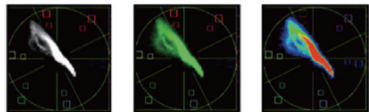
Y, Cb, Cr, R, G, B selection display

Green color

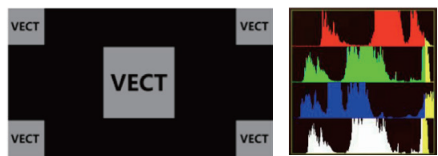
False color

Single line

#### Vector Scope/ Histogram



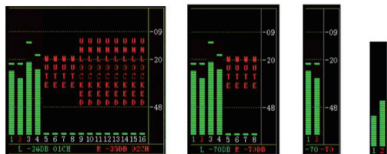
Vector in white    Vector in green    Vector in false color



display position selection:  
four corners and large centre,  
with adjusted transluence

R/G/B/Y parallel display

#### Audio Meter Level



SDI: 16-ch / HDMI: 8-ch  
Select any 2 channel to output  
Audio abnormal alert info display  
Display only 2-ch, 8-ch, or full 16-ch  
Chart position / Translucent adjust

#### Rear Terminals



#### Features

- ◆ 23.8-inch LCD Panel, 1920×1080 resolution
- ◆ 2K/3G/HD/SD-SDI( x2 ), HDMI monitoring
- ◆ Y/Pb/Pr, VGA, CVBS monitoring
- ◆ 16-ch Embedded audio meters with alert
- ◆ Select any 2 audio channels to output
- ◆ Waveform Y/Cb/Cr/R/G/B and single line
- ◆ Vector scope, histogram R/G/B/Y
- ◆ Peaking focus assist (red/blue switch)
- ◆ AFD, Timecode, H/V delay
- ◆ TSL UMD and text TALLY display
- ◆ Safety Marker 4:3/13:9/14:9/15:9/1.85:1/2.35:1
- ◆ False Color, R/G/B/Mono
- ◆ Zebra stripes, Internal Color Bar
- ◆ V-mount / Gold mount battery plate optional
- ◆ USB firmware upgrade

#### Specification

##### LCD Performance

Size	23.8 inches
Display area	527 × 296 mm
Resolution	1920 × 1080
Color	16.77 million colors
Aspect ratio	16:9 / 4:3
Brightness	300 cd/m <sup>2</sup>
Contrast	1000:1
Viewing Angle	H/V:178° / 178°

##### Input/output

Input	Output
BNC × 2	2K/3G/HD/SD-SDI input × 2
BNC × 1	CVBS input
BNC × 3	Y/Pb/Pr input
HDMI × 1	HDMI input
RS-485 × 2	GPI × 1, UMD × 1
USB × 1	USB input (firmware upgrade)
VGA × 1	VGA input
RS-232C × 1	UMD
RCA × 2	L/R audio input
BNC × 2	2K/3G/HD/SD-SDI Loop output
BNC × 1	CVBS Loop output
HDMI × 1	HDMI Loop output
RS-485 × 1	UMD × 1
3.5mm × 1	SDI/HDMI embedded audio output, analog audio output

##### General

Input voltage	AC: 100V-240V DC: 11V-17V
Power consumption	≤36W
Working temperature	0°C ~ +40°C
Working humidity	10% ~ 90%
Storage temperature	-15°C ~ +60°C
Storage humidity	10% ~ 90%
Dimensions	576 × 387 × 87mm
Net weight (main body)	7.2 kg

#### Video Format

Format	Resolution	
SDI	SMPTE-2048-2	2048 × 1080p ( 23.98 / 24 / 25 / 29.97 / 30 / 50 / 59.94 / 60 ) ; 2048 × 1080i ( 50 / 59.94 / 60 )
	SMPTE-425M	1080p ( 60 / 59.94 / 50 )
	SMPTE-274M	1080i ( 60 / 59.94 / 50 )
	SMPTE-RP211	1080p ( 30 / 29.97 / 25 / 24 / 23.98 )
	SMPTE-296M	720p ( 60 / 59.94 / 50 )
	SMPTE-125M	480i ( 59.94 )
HDMI	ITU-R BT.656	576i ( 50 )
		480i / 576i / 480p / 576p
		1080i ( 60 / 59.94 / 50 )
HDMI		720p ( 60 / 59.94 / 50 )
		1080p ( 60 / 59.94 / 50 / 30 / 29.97 / 25 / 24 / 23.98 )
		1080psf ( 30 / 29.97 / 25 / 24 / 23.98 )
Y/Pb/Pr	480i/ 576i / 480p / 576p, 720p (50/60), 1080i (50/60), 1080p (50/60)	
VGA	640 × 480 / 800 × 600 / 1024 × 768 / 1152 × 864 / 1280 × 768 / 1280 × 960 / 1280 × 1024 / 1600 × 1200	
CVBS	NTSC / PAL	