

S-1071H+

7" SDI/HDMI On-camera LCD Monitor

SWIT®



Features

- ◆ 7-inch FFS LCD Panel with LED backlight
- ◆ 1024×600, 900:1 contrast, H/V 160° viewing
- ◆ 2K/3G/HD/SD-SDI, HDMI, CVBS monitoring
- ◆ 2-ch SDI/HDMI/analog audio meters
- ◆ AFD, H/V delay, R/G/B/Mono, False color
- ◆ Zebra stripes, Peaking focus assist
- ◆ SDI timecode display
- ◆ Marker 4:3, 13:9, 14:9, 15:9, 1.85:1, 2.35:1
- ◆ GPI / TALLY input and control
- ◆ Front / Rear TALLY light
- ◆ V-mount, Gold mount or snap-on DV mount
- ◆ USB firmware upgrade



2-ch audio bar



Red/Blue focus assist



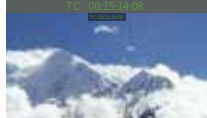
R/G/B/Mono only mode



Zebra stripes



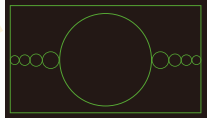
False color



Timecode (LTC, VITC1&2)



H/V delay



AFD



4:3,13:9~15:9,1.85:1,2.35:1

Package includes

Simple package includes



Luxury package has additional



Specification

LCD Performance		
Size	7 inches	
Display area	153.6×90 mm	
Resolution	1024×600	
Aspect ratio	16:9 (4:3 adjustable)	
Brightness	400 cd/m ²	
Contrast	900:1	
Color	16.77 million colors	
Viewing Angle	H/V:160°/160°	
Input/output		
Input	BNC×1	2K/3G/HD/SD-SDI input
	BNC×1	Composite input
	HDMI×1	HDMI 1.3 input
	RCA×2	Analog audio L/R input
Output	BNC×1	2K/3G/HD/SD-SDI loop output
	BNC×1	Composite loop output
	HDMI×1	HDMI 1.3 loop output
	3.5mm×1	SDI, HDMI, Analog audio output
Video Format		
SDI	SMPTE-2048-2	2048×1080p (23.98/24/25/29.97/30/50/59.94/60) 2048×1080i (50/59.94/60)
	SMPTE-425M-A/B	1080p (60/59.94/50)
	SMPTE-274M	1080i (60/59.94/50) 1080p (30/29.97/25/24/23.98)
	SMPTE-RP211	1080psf (30/29.97/25/24/23.98)
	SMPTE-296M	720p (60/59.94/50)
	SMPTE-125M	480i (59.94)
	ITU-R BT.656	576i (50)
HDMI	480i/576i/480p/576p 1080i (60/59.94/50) 720p (60/59.94/50) 1080p (60/59.94/50/30/29.97/25/24/23.98) 1080psf (30/29.97/25/24/23.98)	
	CVBS	
	NTSC/PAL	
	General	
Working voltage	DC / battery 6.5V-17V	
Power consumption	≤10W	
Working temperature	0°C~+40°C	
Working humidity	10%~90%	
Storage temperature	-15°C~+60°C	
Storage humidity	10%~90%	
Dimensions	192×139.5×47.3mm	
Net weight (main body)	550g	

SWIT Electronics Co., Ltd.

Tel: +86-25-85805753

Fax: +86-25-85805296

Email: contact@swit.cc

http://www.swit.cc