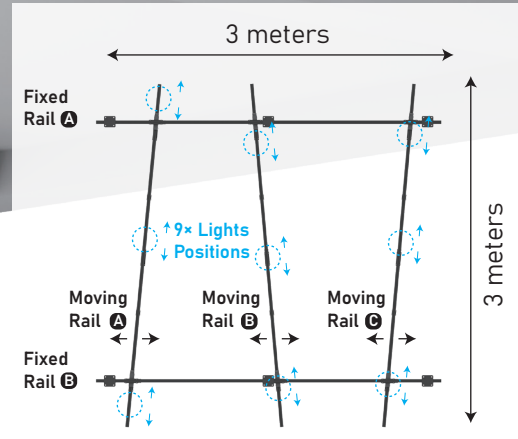




3x3 Ceiling Rail System

GA-CR3009



The GA-RS3009 Ceiling Rail System is a professional studio lighting ceiling install solution, 3 x 3 meters rails to install up to 9 studio lights, smooth overhead movements, saving floor space and ensuring a flexible, efficient, and clutter-free studio setup.

Standard Kit Package

Fixed Rail 3 meters (2x1.5m joint), to be fixed onto the ceiling.

x2

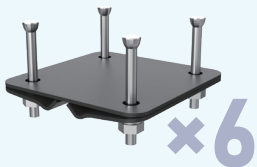
Moving Rail 3 meters (2x1.5m joint), connect with Fixed Rail by the Double Rail Pulley.

x3

Adjusting Rod

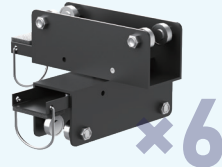
1.3m - 3m stretch, to unbrake and move the lights.

x1



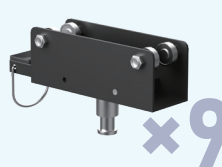
Ceiling Fix Plate

To install the Fixed Rail onto the ceiling. Using 3 fix plates for each rail.



Double Rail Pulley

Install between the Fixed Rail and Moving Rail, with brake locker.



Light Pulley

To Install lights onto the Moving Rail, 5/8" (16mm) baby pin head, with brake.



Pantograph Adaptor

5/8" baby pin receiver for the light pulley to install SWIT GA-PT pantographs.



Cable Pulley

Install onto the Moving Rail to fix cables.

