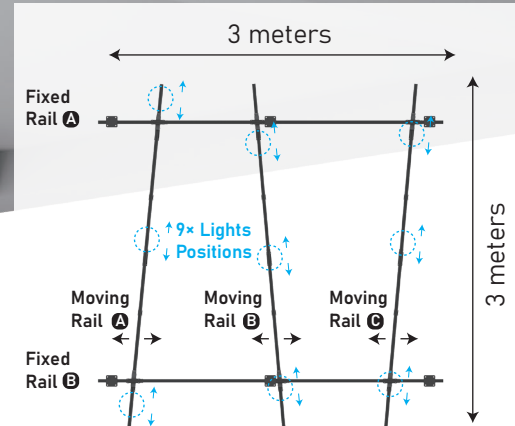


3x3 Ceiling Rail System

GA-CR3009



The GA-RS3009 Ceiling Rail System is a professional studio lighting ceiling install solution, 3 x 3 meters rails to install up to 9 studio lights, smooth overhead movements, saving floor space and ensuring a flexible, efficient, and clutter-free studio setup.

Standard Kit Package

Fixed Rail 3 meters (2x1.5m joint), to be fixed onto the ceiling.

x2

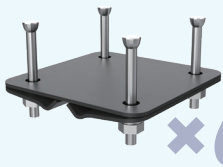
Moving Rail 3 meters (2x1.5m joint), connect with Fixed Rail by the Double Rail Pulley.

x3

Adjusting Rod

1.3m - 3m stretch, to unbrake and move the lights.

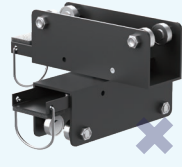
x1



x6

Ceiling Fix Plate

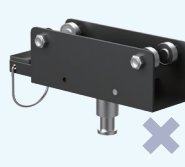
To install the Fixed Rail onto the ceiling. Using 3 fix plates for each rail.



x6

Double Rail Pulley

Install between the Fixed Rail and Moving Rail, with brake locker.



x9

Light Pulley

To Install lights onto the Moving Rail, 5/8" (16mm) baby pin head, with brake.



x9

Pantograph Adaptor

5/8" baby pin receiver for the light pulley to install SWIT GA-PT pantographs.



x9

Cable Pulley

Install onto the Moving Rail to fix cables.

